

APPROVAL SHEET

SHENZHEN PUWEI TECHNOLOGY CO.,LTD.

PURE-V
TECH



Product Description: Dielectric Duplexer 1995-2185 MHz SMD 21.5*11.0*5.5mm (BW=30.0MHz)

| | |
|----------|------------------------|
| Part No. | CMDM8C1995F30/2185F30C |
| Pages | 5 |
| Date | 2023/03/23 |
| Revision | 1.0 |

| | |
|--------------|-----|
| Prepared by: | 邓兆源 |
| Checked by: | 张勃 |
| Approved by: | 李时 |



Electronic Characteristics

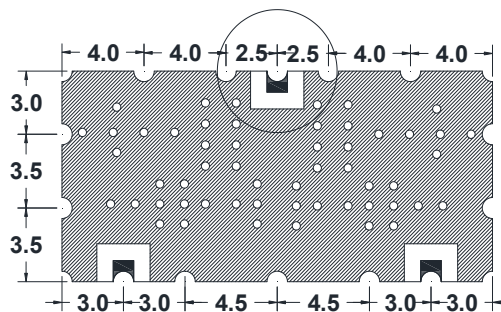
| Item | | ANT>>Low | ANT>>High | Unit |
|------------------------------------|----------------|----------------------------|----------------------------|-------|
| Center Frequency [f ₀] | f _c | 1995.0 | 2185.0 | MHz |
| Bandwidth [BW] | BW | f ₀ ± 15.0 | f ₀ ± 15.0 | MHz |
| Insertion Loss in BW | IL | 0.9 max | 0.9 max | dB |
| Ripple in BW | △α | 0.3 max | 0.3 max | dB |
| VSWR in BW | | 1.3:1 max | 1.3:1 max | Raito |
| In/Out Impedance | | 50 | | Ω |
| Attenuation [Absolute Value] | α | 55.0 min @ 2170 ~ 2200 MHz | 55.0 min @ 1980 ~ 2010 MHz | dB |
| Input Power | P | ≥3 | | W |
| Operation Temperature Range | | -55 ~ +85 | | ℃ |

Package Dimensions (Unit: mm)

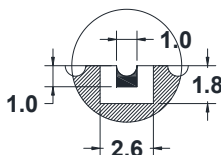
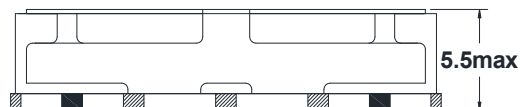
TOP VIEW



BOTTOM VIEW

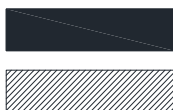
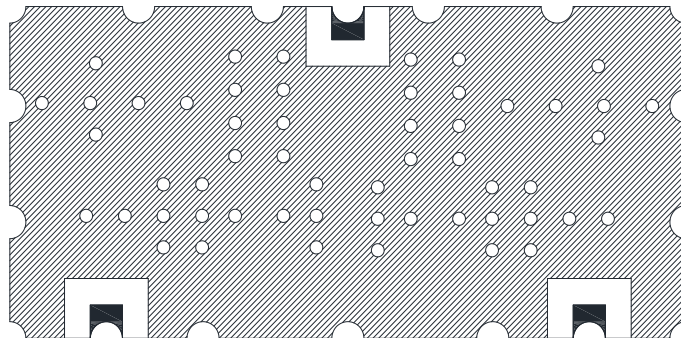


FRONT VIEW



I/O PORT
 GROUND
 TOLERANCE : ±0.30
 UNIT: mm

RECOMMENDED PC BOARD PATTERN



I/O PORT
GROUND